

# Shear Beam

## Type Series FSB34



### Features:

- Measuring range from 5 kN to 100 kN
- Stainless steel construction
- Unique blind loading hole
- Inexpensive price
- Lower profile design
- High input resistance
- Protection class IP68

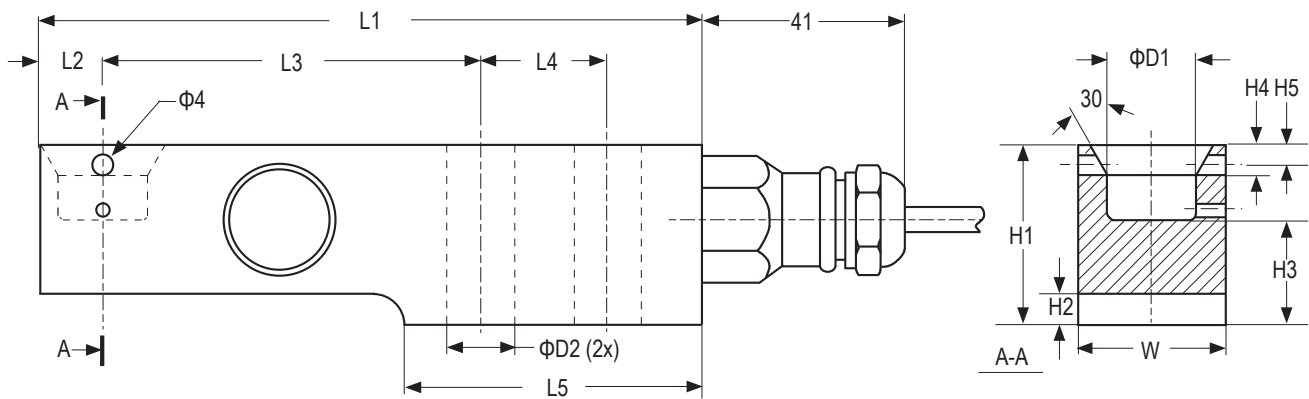
### Applications:

- Weight & dosing applications
- Force measurement
- Platform scales
- Production lines
- Measurement and inspection equipment
- Testing and manufacturing plants

### Technical data:

Maximum capacity	kN	5 / 10 / 20 / 50 / 100
<i>1 N = 0.10197 kg</i>	kg	510 / 1020 / 2039 / 5099 / 10197
Temperature effect on minimum dead load output	% FS /10°C	≤ ± 0.0400      ≤ ± 0.0127
Temperature effect on sensitivity	% FS /10°C	≤ ± 0.0200      ≤ ± 0.0100
Combined error	% FS	≤ ± 0.0500      ≤ ± 0.0200
Non-linearity	% FS	≤ ± 0.0400      ≤ ± 0.0166
Hysteresis	% FS	≤ ± 0.0400      ≤ ± 0.0166
Creep error (30 minutes)	% FS	≤ ± 0.0600      ≤ ± 0.0166
Rated output	mV/V	2 ± 0.1%
Zero balance	%	≤ ± 5
Excitation voltage	% FS	5 ... 15
Input resistance	Ω	1100 ± 50
Output resistance	Ω	1000 ± 2
Insulation resistance (100 V DC)	MΩ	≥ 5000
Safe load limit	% FS	200
Ultimate load	% FS	300
Safe side load	% FS	100
Compensated temperature range	°C	-10 ... +40
Operating temperature range	°C	-40 ... +80
Load cell material		stainless steel 17-4 PH
Sealing		complete hermetic sealing
Protection according EN 60 529		IP68 (up to 2 m water depth)

### Dimensions:



Range	L1	L2	L3	L4	L5	H1	H2	H3	H4	H5	W	D1	D2	Mounting bolts	Torque *
5/10/20 kN	155	15	80	35	76	36	6	21	7	4	30	18	13	M12 8.8	90 Nm
50 kN	190	21	105	40	93	49	8	28.5	6	8	43	25	21	M20 8.8	400 Nm
100 kN	245	20	135	50	120	73	12.5	42	10	n.a.	60	30	27	M24 8.8	700 Nm

\* Torque values assume oiled threads.

### Electrical connections:

